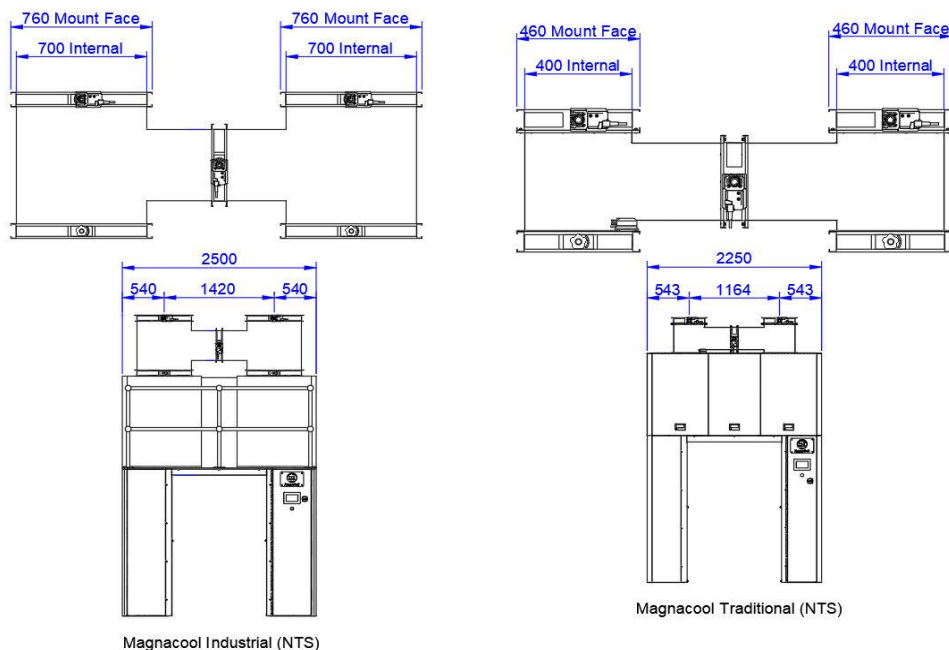
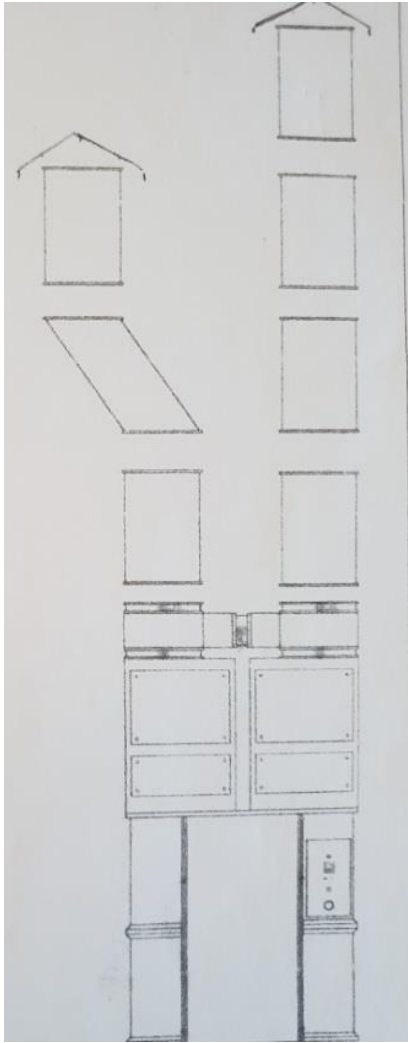


**A General Guide to Ducting from a Magnacooler.**

- I. Information herewith is based on models, Magnacool Industrial & Magnacool Traditional, please refer to your final approved drawings before proceeding with ducting works.
- II. The dimensions of ducting required for the Magnacool Industrial is 700mm x 700mm and for the Magnacool Traditional is 400mm x 400mm.
- III. Ducting from the Magnacooler is the responsibility of the customer, we do not supply/sell/install ducting.
- IV. We recommend that you do not cut any holes in the roof or fit any ducting until your ducting engineers have met with our own installation engineers on the 1<sup>st</sup> day of installation; this will ensure that the final position of the Magnacooler & ducting can be agreed.
- V. Cutting/opening/closing/sealing in the roof/wall is the responsibility of the customer - 2 x 800mm openings per Industrial Magnacooler and 2 x 500mm openings for the Traditional Magnacooler.
- VI. The maximum length of ducting from the Magnacooler is up to 20 meters.
- VII. Please ensure the minimum number of bends or curves in the external ducting from your Magnacooler. (*The straighter the ducting the more efficient your cooling process will be.*)
- VIII. The hoods/chimneys/covers/hats on the internal & external ducting must be facing/positioned a minimum of 2m away from each other.
- IX. Any planning or building requirements are the responsibility of the customer.



All Magnacool Industrial models have ducting 700mm x 700mm – inlet on the left, outlet on the right.  
 All Magnacool Traditional models have ducting 400mm x 400mm – inlet on the left, outlet on the right.



Ducting can go direct or have a curve.



Example of Ducting from a Magnacooler



The hoods/chimneys/covers/hats on the internal & external ducting must be a minimum of 2m away from each other.